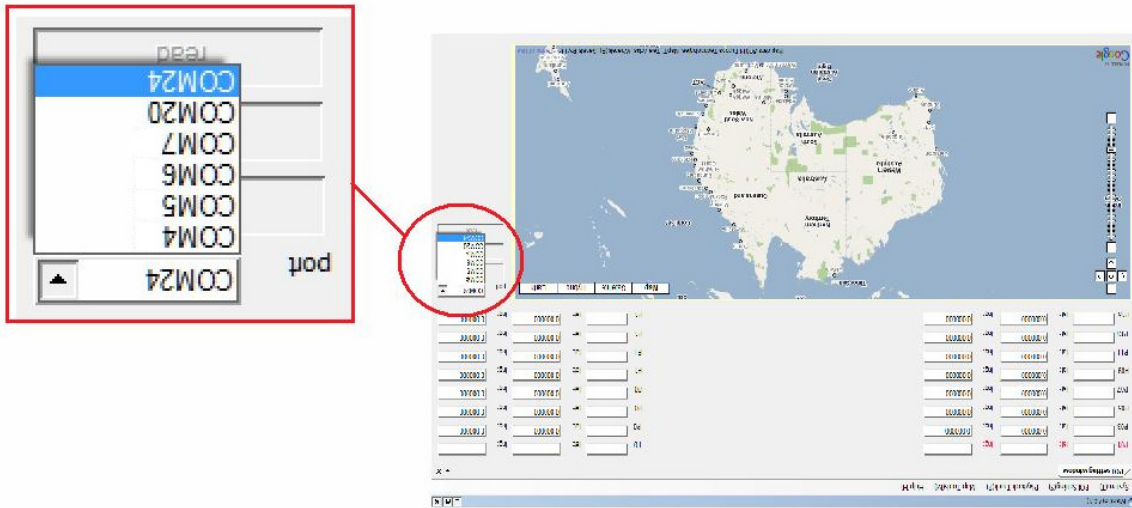




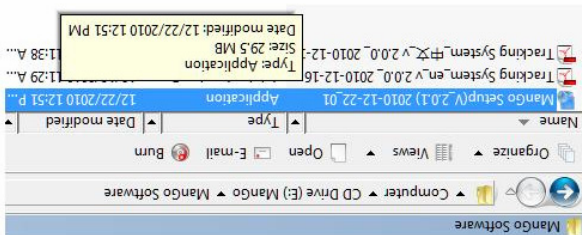
POI can be recorded on a spot or through supplied software (Windows XP, Vista, Windows 7; internet connection required). For connection with PC please use supplied cable.

Setup and information windows – scroll by key 4.

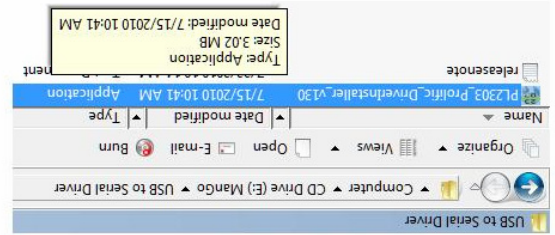
1. DataLogger – Setup of the logger interval (recorded data can be viewed by using supplied software)
 2. Backlight – Setup of the screen backlight time
 3. Timezone – Setup of a time zone (00:00 = GMT)
- Setup (1, 2, 3) – click key 1 in relative window, with keys 3 & 4 chose value, save with key 1*
4. Compass (works with GPS signal and when moving)
 5. Mileage – Total distance
 6. DST – Distance of a trip (click key 1 to start); Time – time from the beginning of the trip; AVS – average speed during the trip
 7. Lat and Lng – Current longitude and latitude
 8. Date and Time – Current date and time (syncs with the satellites, local date and time is shown when you chose your time zone in 3.Timezone)
 9. Current speed and altitude



3 -Choose the last port appeared down the list then click "Open"



2 -Open Mango Software



1 - Install USB to Serial Driver

How to let Mango communicate with your Computer